

# ***eibPort***

## EIB Gateway

Database connection

## Table of Contents

<b>1</b>	<b>General Information .....</b>	<b>3</b>
<b>2</b>	<b>Installing XAMPP .....</b>	<b>4</b>
<b>3</b>	<b>Configuring the eibPort database connection .....</b>	<b>5</b>
3.1	Creating a new database connection .....	6
3.2	Creation of a table .....	8
3.3	Generate SQL query.....	9
<b>4</b>	<b>Creating the database with phpMyAdmin .....</b>	<b>11</b>
4.1	Creating a new database user.....	13
<b>5</b>	<b>Checking the database connection.....</b>	<b>14</b>

b.a.b-technologie gmbh  
Heinrich-Hertz-Straße 4

59423 Unna

Germany

Tel.: +49 2303 25 30 1-0  
Fax.: +49 2303 35 30 1- 490

Internet.: www.bab-tec.de  
Email.: info@bab-tec.de

# 1 General Information

The instructions on hand describe laying out a database connection between the eibPort and a MySQL database.

In the database can in a professional way record log information, telegram notes and the current status of group addresses.

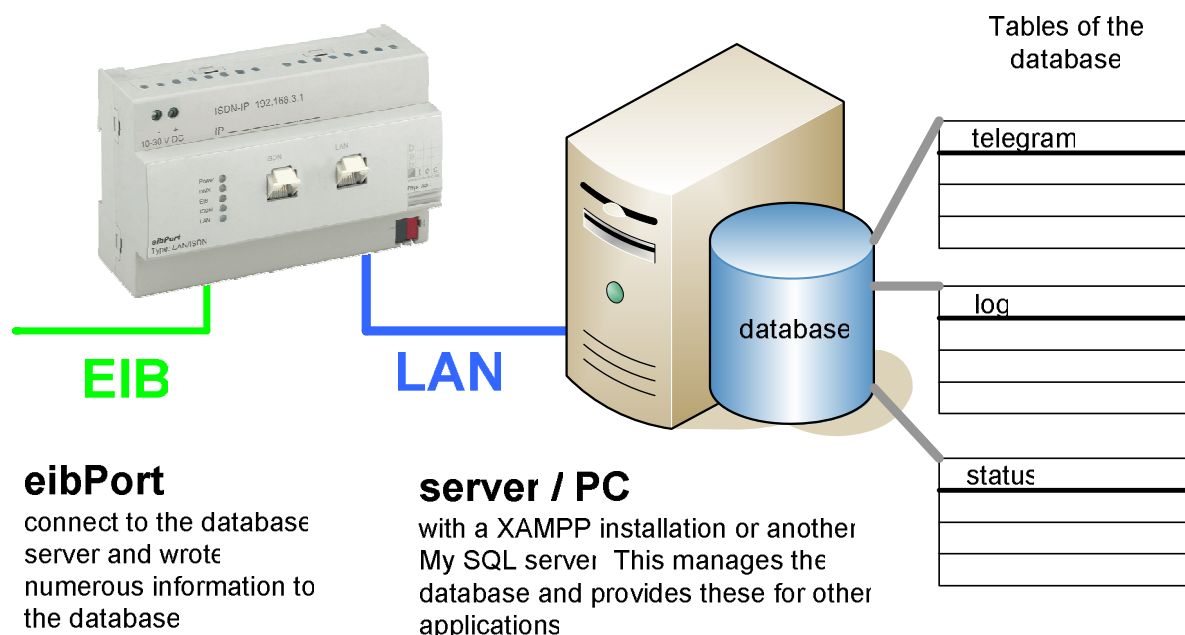
In these instructions the configuration of the database connection is described in connection with the installation of the package of XAMPP.

XAMPP is of a distribution Apache, MySQL, PHP and Perl, this one makes server applications to a very simple way to install possible.

This package puts Open source applications together, it can be loaded down free at the Internet on the web page [www.apachefriends.org](http://www.apachefriends.org). XAMPP is available in two explanations, these are different by the extent of the programs contained in it. For our requirements the smaller package of XAMPP Lite is sufficient.

The functionality of the data connection is not bound to XAMPP.

The database communication cooperates with every My SQL server so that also existing My SQL servers can be used.



## 2 Installing XAMPP

First step is to install XAMPP. Download XAMPP Lite at [www.apachefriends.org](http://www.apachefriends.org) for Windows and extract the files to the directory of your choice.

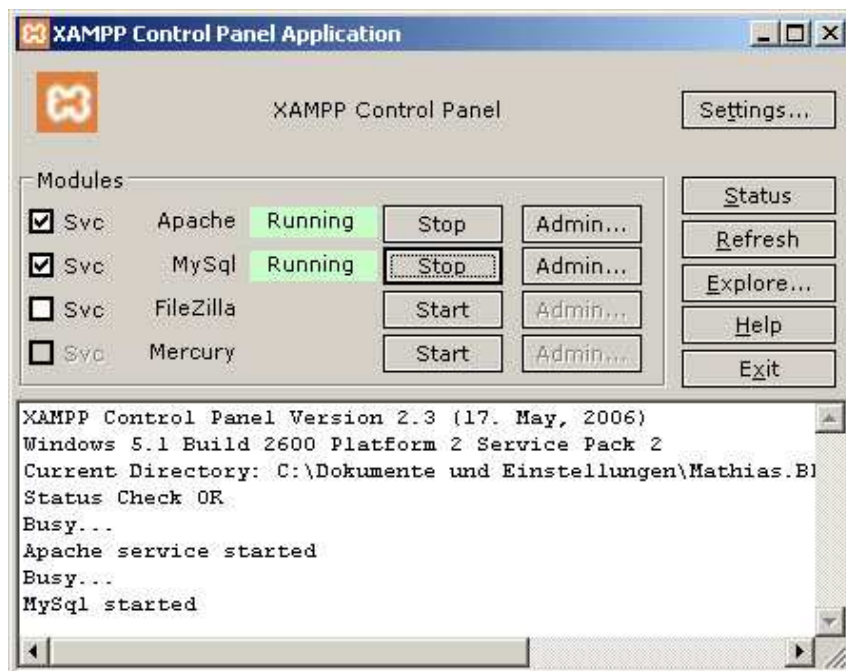
Go to that directory and double-click the file setup\_xampp.bat to start the installation.

After the installation double-click on xampp-control.exe. A window appears which shows the XAMPP Modules which can separately be started or installed as a Windows service.

Mark the checkboxes for Apache and MySQL to install these Programs as a service. They will automatically run when windows starts up, you don't need to put them in autostart or something else. After installing them as service, click on the start button. This needs only be done this time, on reboot they should start up automatically.

PHP is a module of Apache and does not need to be started.

After configuration the window should look like this:



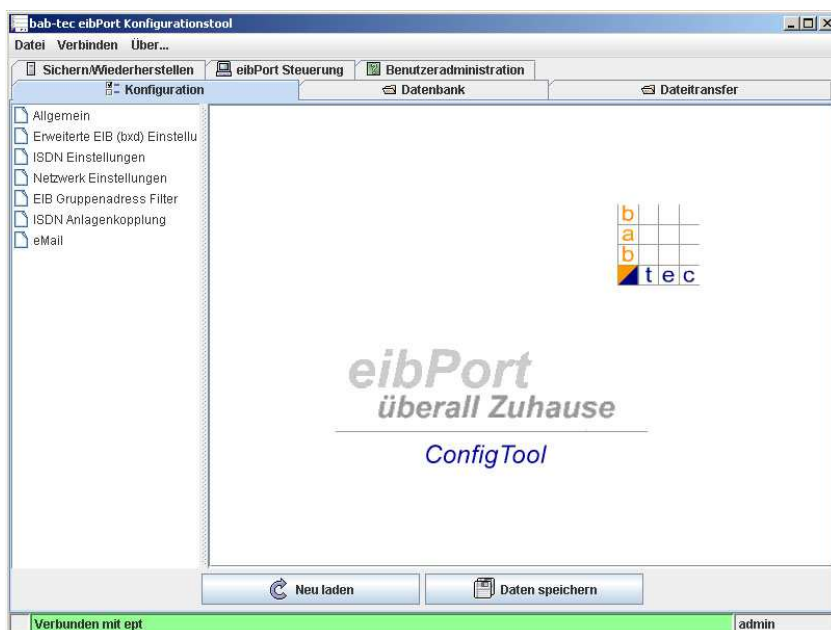
The web- and MySQL servers are installed now. You may close this window.

Now you can already visit your local web server by typing <http://localhost> into the address line of your internet browser. Here you can see lots of information about XAMPP and the contained modules.



### 3 Configuring the eibPort database connection

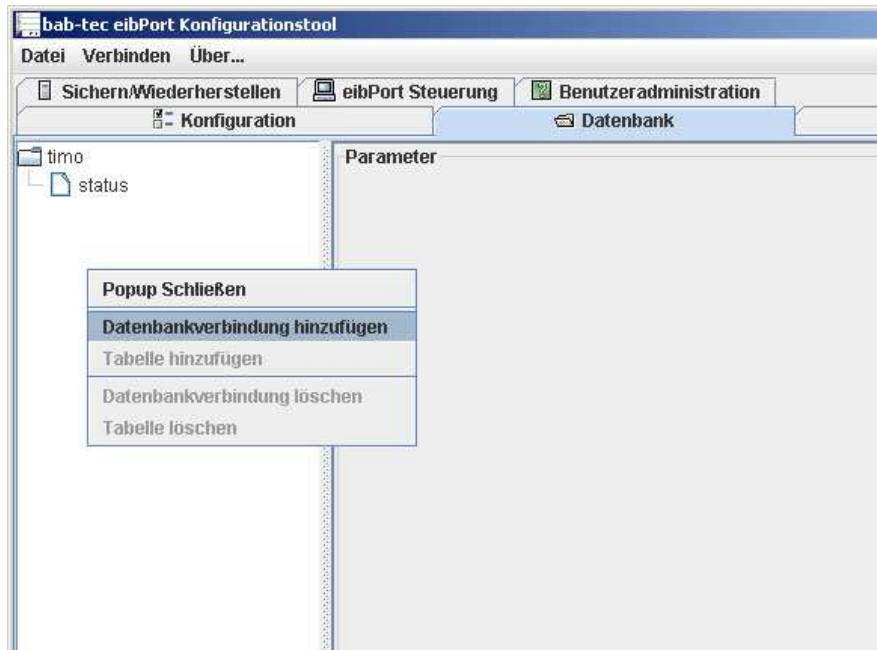
The database configuration for the eibPort is done in the ConfigTool. Connect to the eibPort and start the ConfigTool by clicking the „System“ button on the startpage. After logging in with your account click on the database-tab at the top of the window.



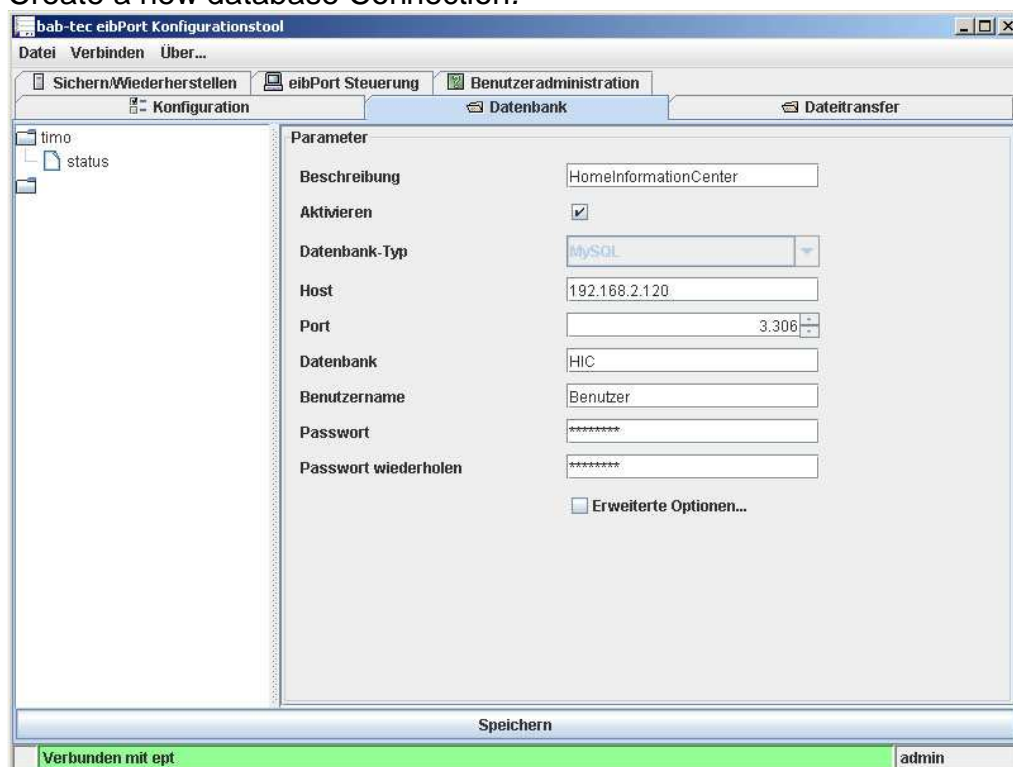
Click on the database tab.

### 3.1 Creating a new database connection

The eibPort can handle one or more database connections. To create a new database connection right-click into the left part of the window and choose “Create database connection”.



Create a new database Connection.



A mask with the configuration data will be opened.

**Here you have to configure the following parameter.**

Description	This is the description for the database connection. This is only for your orientation so you can choose it on your own.
Activate	Activate or deactivate this database connection.
Database type	At this point, eibPort only supports MySQL databases.
Host	Insert the IP address of the database server.
Port	Insert the port for database communication. For MySQL the default port is 3306. Watch out that the firewall doesn't block this port.
Database	Insert the name for the database.
Username	Insert the username for access to the database. This user must have INSERT, UPDATE and DELETE rights.
Password	Insert the password for the user above.

After that, please save the configuration mask.

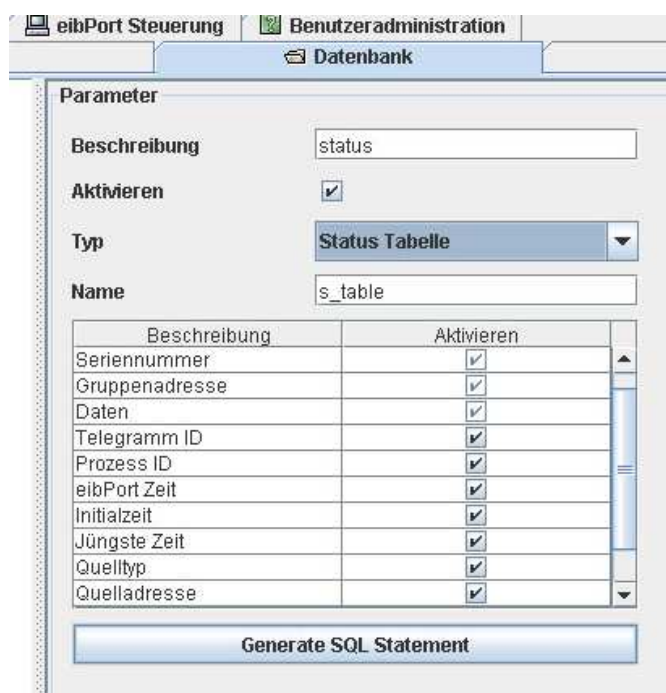
### 3.2 Creation of a table

One database can contain multiple tables which will be kept up to date by the eibPort. You can choice between status, telegram and log table. These tables can be created for logging and analysing. The status table is used by the Home Information Center.

To create a new table, just rightclick on the previously created database connection.



A new table will be created and the following parameters must be configured.



Description	This is a description for this table. You can choose it on your own.
Activate	Activate or deactivate this table.
Type	Choose a tabletype
Name	Insert the name of the table.

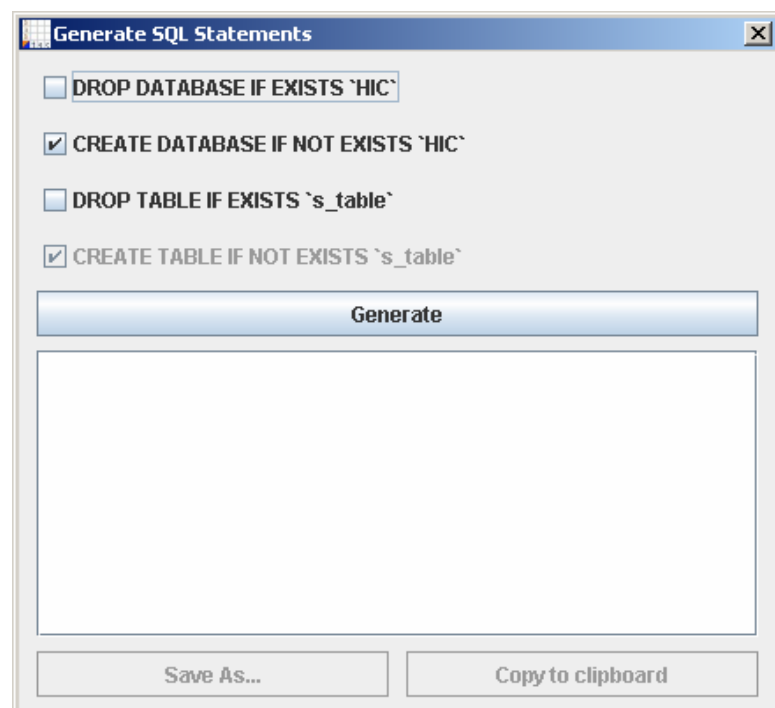
The table below shows which information will be stored into the database.

### 3.3 Generate SQL query

eibPort makes it easy to create the new database by generating the necessary SQL queries. So you can create the database without having deeper knowledge about MySQL.

Click on the Button *Generate SQL Statements*.

The following dialog opens.



**Select the necessary options.**

DROP DATABASE IF EXISTS `HIC`

If there is a database named HIC it will be deleted before creating the new one.

CREATE DATABASE IF NOT EXISTS `HIC`

The database HIC will be created if it does not exist.

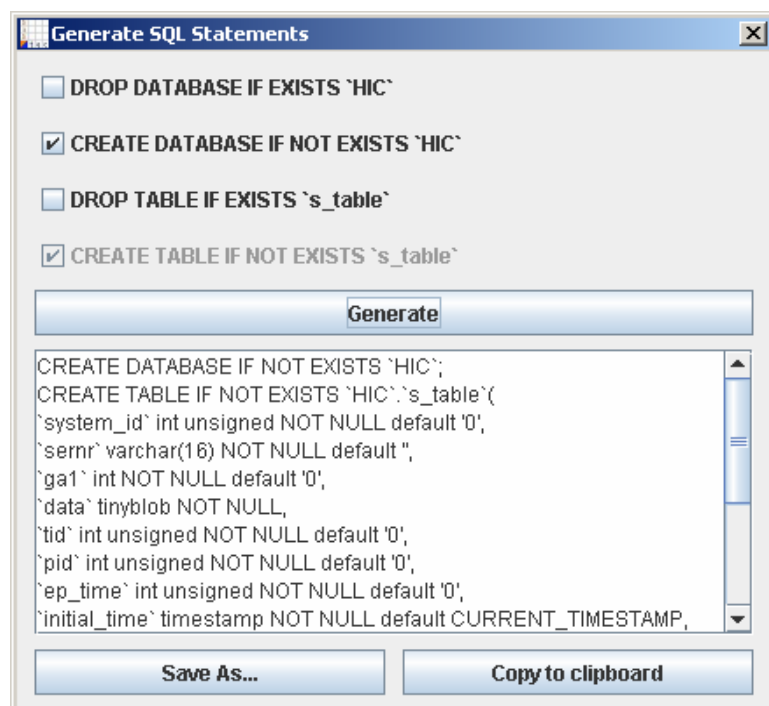
DROP TABLE IF EXISTS `s\_table`

If a table named s\_table exists, it will be deleted before creating the new one.

CREATE TABLE IF NOT EXISTS `s\_table`

A table s\_table will be created if it does not exist.

Next click on “Generate” to create the SQL statement.

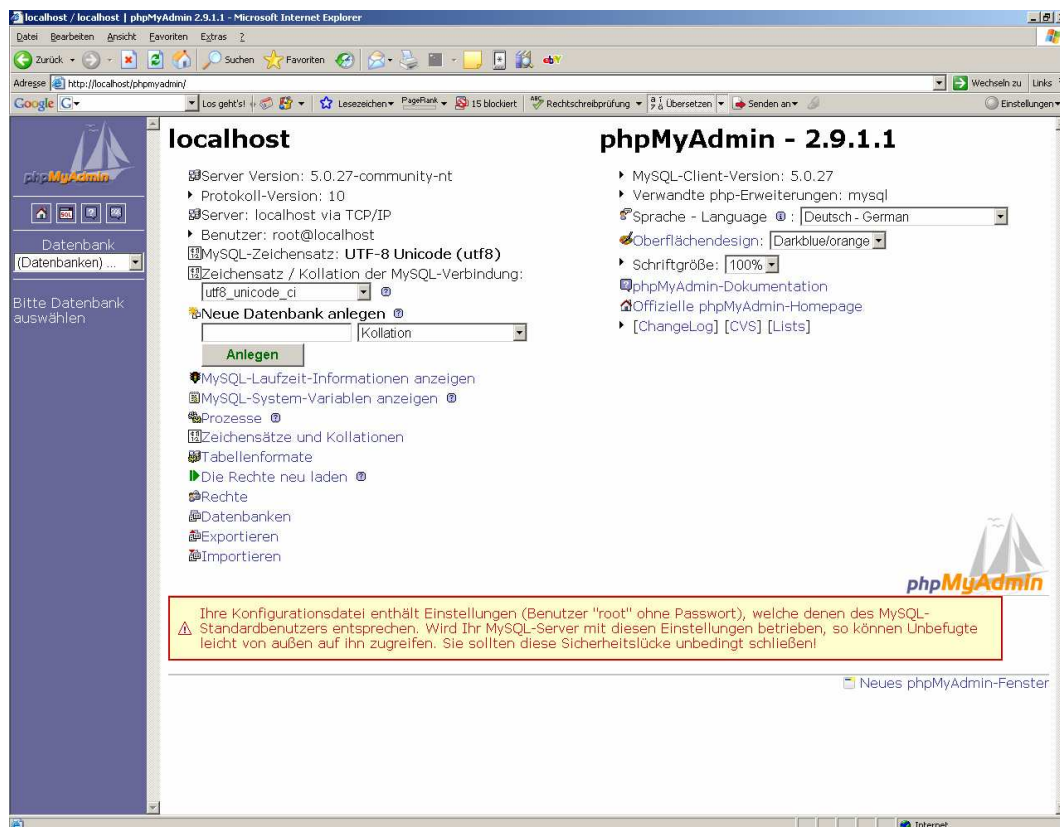



Now you can copy this statement by clicking „Copy to clipboard“.

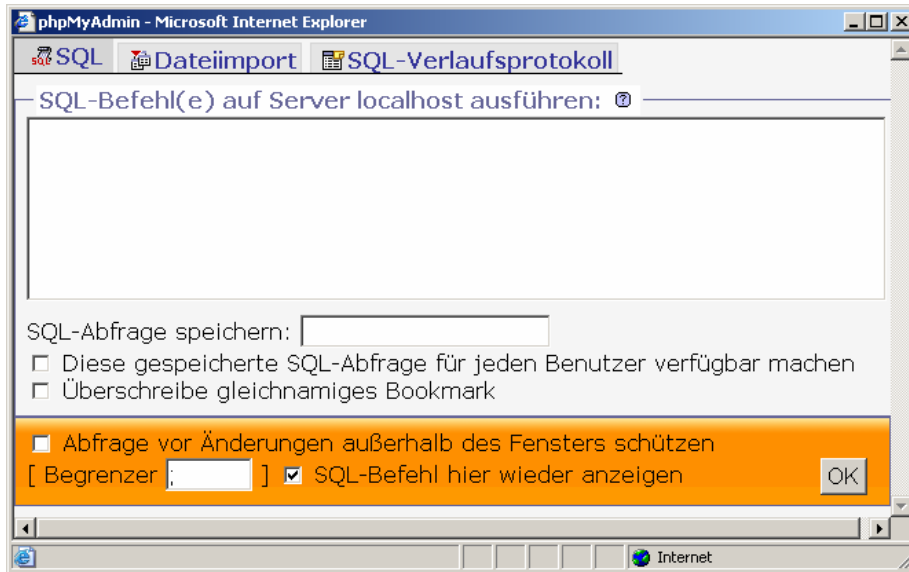
Close this dialog and save the database configuration.

## 4 Creating the database with phpMyAdmin

You can create the database and tables with phpMyAdmin. This is an easy to use HTML-frontend to manage MySQL. Open your browser and open the site *http://localhost/phpmyadmin* . If the XAMPP installation is not on the local computer, you have to exchange localhost with the IP address of the database server.



Click on the button  on the top left to open the following window.



Click into the textfield and press CTRL+V (or rightclick and select „paste“) to insert the SQL statement from the clipboard. Click on OK to continue and you should see a success message in the next window.



You will find the new database in the dropdown box on the left. The numbers of tables in the database are displayed behind the tablename.



## 4.1 Creating a new database user


You should create a new database user for your database. Using the „root“-user would be a security hole. Select the database from the left and click on the link in the left column

 Rechte

and click

 Neuen Benutzer hinzufügen

Use the same settings for username and password as in the file config.php and the database settings in the configtool.

 Importieren

 **Neuen Benutzer hinzufügen**

Logininformationen

Benutzername:  Benutzer

Host:

Passwort:  .....

Wiederholen:

Passwort generieren:

Datenbank für Benutzer

Keine

Grant the following rights for the new user:

Daten

SELECT


INSERT

UPDATE

DELETE

FILE

Save these settings by clicking OK at the bottom right of the page.

Use the link  Rechte to get back to the user administration. There all users including their rights are listed and you could edit delete them.

The installation and configuration of database is now complete.

## 5 Checking the database connection

To check if the eibPort is connected to a database, open a browser-window and type in the url:

**http://<ip of your eibPort>/cgi-bin/db\_statcgi**

Now the current database state gets displayed.

### eibPort database status

1. Configured Connection:
  - ◊ Description: **'timo-dt1'**
  - ◊ Host: **'172.31.49.49'**
  - ◊ user@db: **'babtec@babtec'**
  - ◊ Status: **enabled**
  - ◊ Active?: **no**
  - ◊ Last errno: **2013**
  - ◊ Last error: **'Lost connection to MySQL server during query'**
  - ◊ Next reconnect try: **on next event (-45116)**
  - ◊ Configured Table:
    - Description: **'status'**
    - Status: **enabled**
    - Active?: **no**

For an active connection the point **"Status"** has to be **"enabled"** and the point **"Active"** has to be **"yes"**.