

User Manual

eibDesk Editor

eibDesk Client

b.a.b-technologie gmbH
Heinrich-Hertz-Straße 4
D-59423 Unna

1. Information about this handbook	3
2. Installation	4
2.1. System requirements	4
2.2. Starting eibDesk Editor	4
2.3. Starting eibDesk	5
3. eibDesk Editor	5
3.1. Program survey	6
3.2. Creating a Project	7
3.2.1. Loading ESF-file	8
3.2.2. Creating folder structure	8
3.2.3. Creating and configuring offices	9
3.2.4. Creating and configuring elements	10
3.2.4.1. The Element „Switch“	11
3.2.4.2. The Element „Jalousie move“	13
3.2.4.3. The Element „Jalousie Step“	13
3.2.4.4. The Element „Temperature“	14
3.2.4.5. The Address-Choice-Dialog / ESF-Dialog	15
3.2.4.6. Manual address input	16
3.2.5. Save / Load	18
3.2.6. Creating Project Documentation	18
3.2.7. Upload to eibPort	19
4. eibDesk Client	19
4.1. Program survey	19
4.2. eibDesk Configuration	20

1. Information about this handbook

Object

This user manual describes the installation and use of the eibDesk Editor in Windows. The program is also executable in other operating systems. Required is the installation of Java 1.5.0 (J2SE).

Target group/Function

The user manual addresses to installers that want to make a project with eibDesk. A basic knowledge of the technique of the EIB is required.

eibDesk consists of two program parts: eibDesk Editor and eibDesk Client.

With the eibDesk Editor each office is configured. The data is stored in eibPort. Up to 250 offices can be administrated. Creating the panels is very easy and can be done individually for each Client.

The eibDesk Client is a small application for the Client-PC. After accessing with user name and password the client fetches the panel data from eibPort.

Advantage of this solution is that all the panel data is stored in eibPort. If the office PC is replaced it is not necessary to create a new panel.

2. Installation

2.1. System requirements

The eibDesk Editor has very low hardware and software requirements.

It is executable on every system with installed Java 2 Platform Standard Edition 5.0 (J2SE 5.0).

J2SE 5.0 is available at Sun Microsystems (<http://java.sun.com> or <http://www.java.com>). For the installing please follow the installation instructions of Sun.

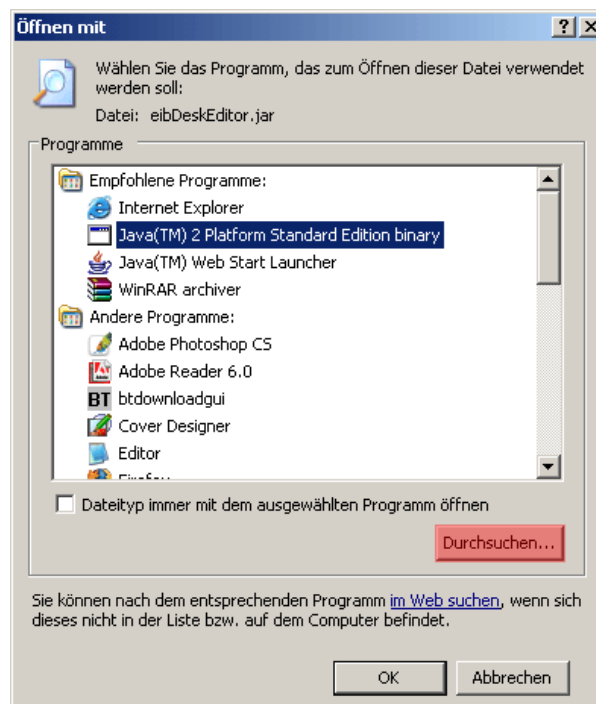
For uploading the configuration data and for using the eibDesk Client a LAN / internet or ISDN connection to the eibPort is required.

2.2. Starting eibDesk Editor

At the first run of the editor you have to make sure that the .jar file is started with the Java virtual Machine. At further program runs double clicking on eibDeskEditor.jar is enough.

To link the .jar file to the Java VM do the following:

1. Right-click on eibDeskEditor.jar and choose the menu item „open with“ • „Choose program...“. Click on „Durchsuchen“.

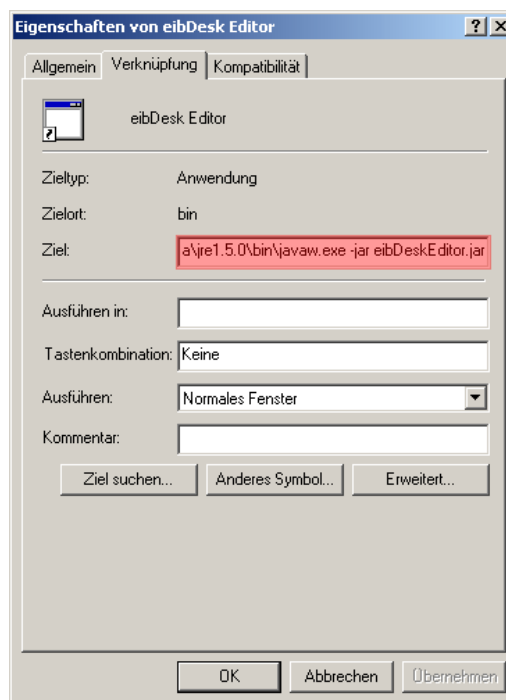


2. Type in the complete file name to the javaw.exe file. Normally this is C:\Programme\Java\jre1.5.0\bin\javaw.exe. After clicking on "Öffnen" the chosen program appears as „Java(TM) 2 Platform Standard Edition Library“.

3. For the eibDesk Editor always starting with the Java VM checkbox „Dateityp immer mit dem ausgewählten Programm öffnen“ has to be marked.
4. By clicking on OK the eibDesk Editor starts. Further program starts are done by a double click eibDeskEditor.jar.

Alternatively you can apply a link eibDesk Editor.
The aim must be:

<path to JavaVM>\javaw.exe -jar <path to eibDeskEditor>\eibDeskEditor.jar>



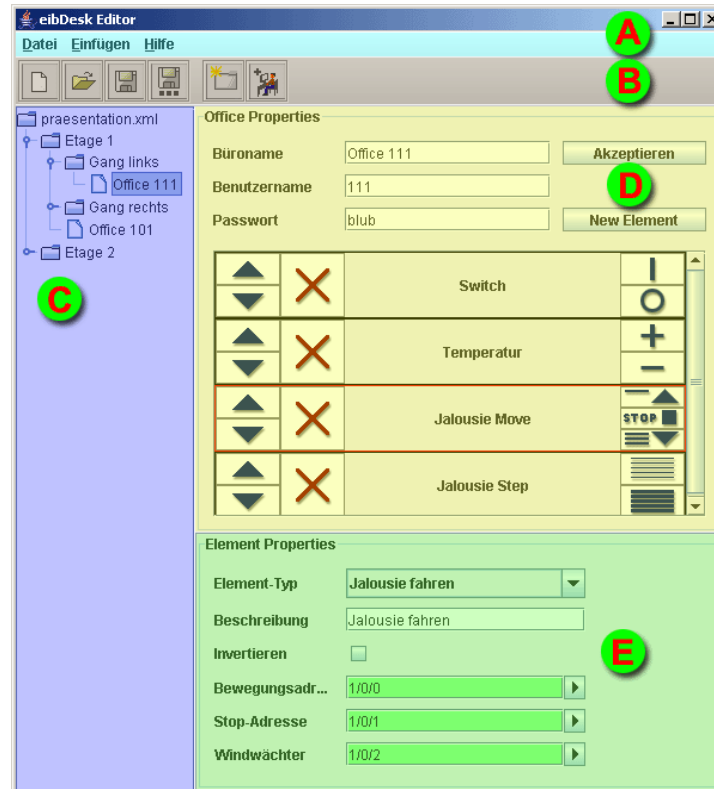
2.3. Starting eibDesk

For starting the eibDesk Client follow the instructions according to the instructions for starting the eibDesk Editor (chapter 2.2).

3. eibDesk Editor

The eibDesk Editor is used for configuring the office operation surfaces. The offices can be subdivided in a tree structure. The data is stored in XML files; a html documentation can be created and printed. For providing projects to the eibDesk Client the projects can be transmitted to the eibPort.

3.1. Program survey



eibDesk Editor: division and survey

- | | |
|--------------------------|---|
| A) Menu bar | Access to all project related functions and help. |
| B) Tool bar | Fast access to the most important functions. |
| C) Project tree | View of the project structure and access to the offices. |
| D) Office configuration | Entry of office name and access data. Choosing of the office elements. The current element is framed with red colour. |
| E) Element configuration | Configuration of element properties. Choosing of element type, description and addresses of the element. |

3.2. Creating a Project

As example a project with two floors and one office at each floor shall be created.

Floor 1:

Office 101:

	1/0/0
Jalousie move	1/1/0
Jalousie step	1/1/1
Jalousie stop	1/1/2
Wind alarm	1/1/3

Floor 2:

Office 201:

Main lighting	2/0/0
Actual temperature	2/1/0
Set temperature	2/1/1

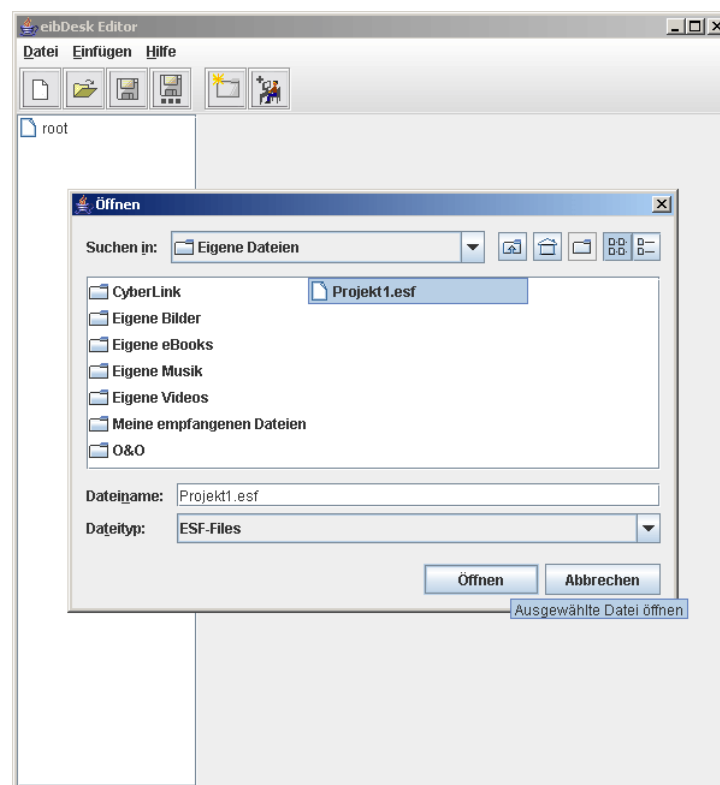
In the following a project is created, saved, documented and transmitted to the eibPort.

3.2.1. Loading ESF-file

Loading an ESF-File is an option and makes assigning group addresses more easy.

The eibDesk Editor provides the possibility to read in project data from the ETS. For this the data has to be exported from the ETS into an ESF-file. Read the instruction manual of the ETS.

To load the ESF-file into eibDesk click on the button „ESF laden“ or chose from the menu „Datei“ • „ESF-Datei einbinden“. Then choose the EFS-file in the file browser. After loading an success message appears.



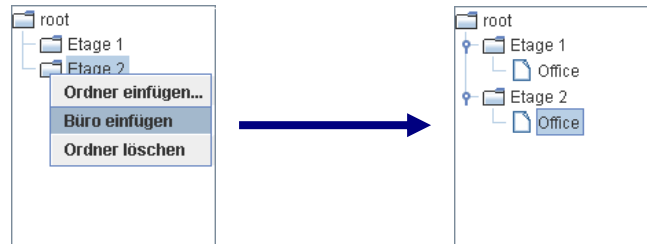
eibDesk Editor: loading ESF-file

3.2.2. Creating folder structure

It would be useful to divide the project by the floors. So at first create two folders. Click on the button „Neuen Ordner erstellen“. A subfolder is always created in the selected folder. If the new folder should be created in another main folder the main folder has to be selected first. Alternatively subfolders can be created by clicking on a folder in the project tree with the right mouse button.

3.2.3. Creating and configuring offices

Now in each folder an office is created. Click on the button „Neues Büro erstellen“. The office is always created in the selected folder. Alternatively offices can be created by clicking on a folder with the right mouse button and choosing „Büro einfügen“.



To configure an office it has to be selected in the file tree first. Click on „Office“ in floor 1 and configure according to the following:

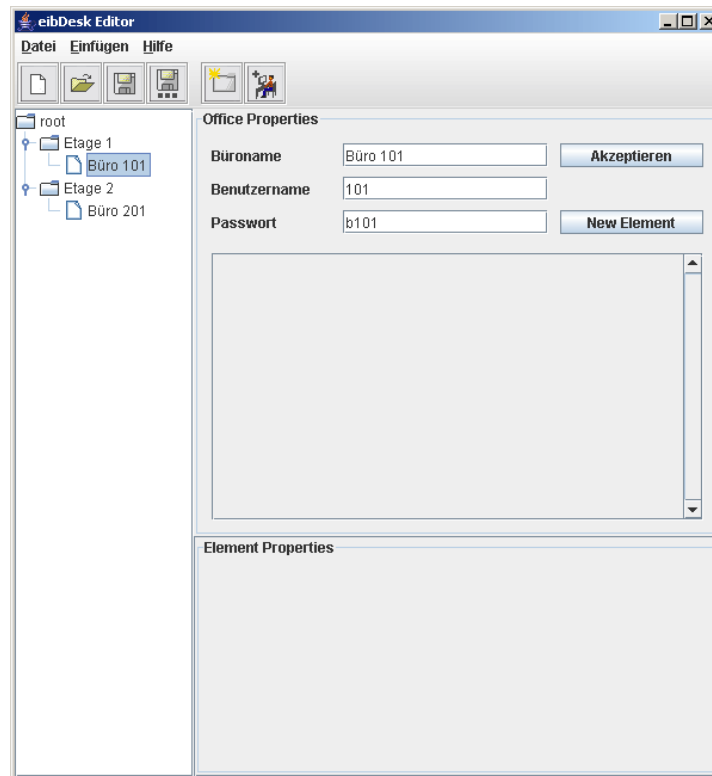
Office name:	Office 101
User name:	101
Password:	b101

To the office at floor 2 assign the following data:

Office name:	Office 201
User name:	201
Password:	b201

The access data (user name and password) may be chosen freely.

If the office name was changed the project tree will be updated when another office is selected or when you click on „Aktualisieren“.



eibDesk Editor: offices created and configured

3.2.4. Creating and configuring elements

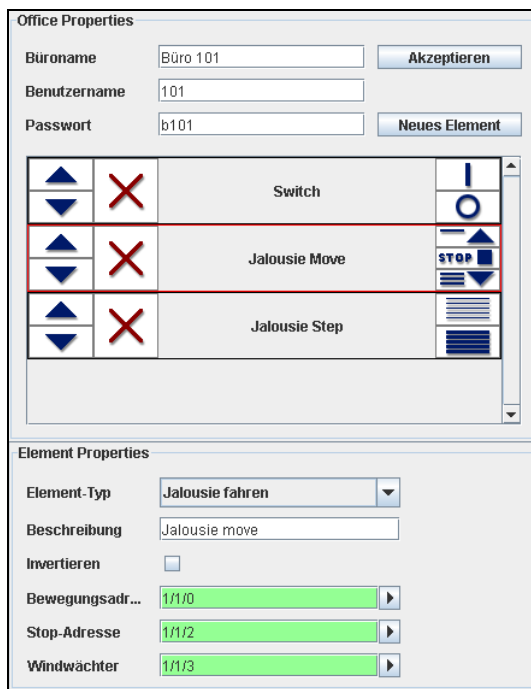
Now select the office 101 and click on "Neues Element". A new switch in the element survey appears. By the choice „Elementtyp" you may choose between the elements switch, jalousie move, jalousie step and temperature. The possible element properties appear.

For the office 101 the following elements shall be created:

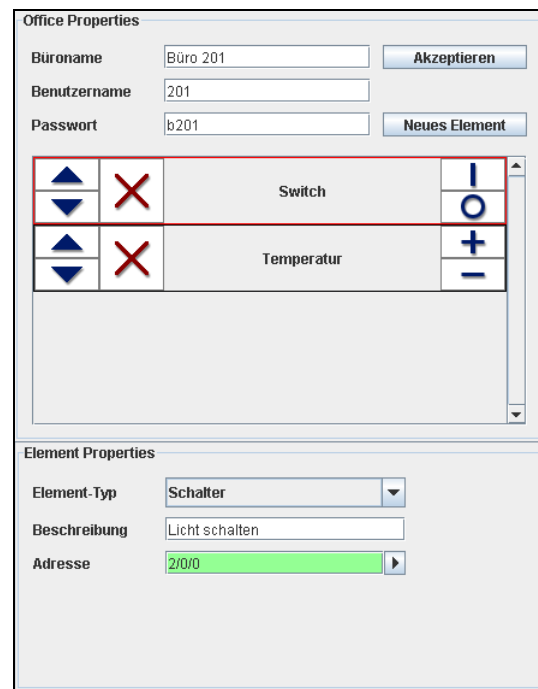
Switch	
Address:	1/0/0
Jalousie move	
Move address:	1/1/0
Stop address:	1/1/2
Wind alarm:	1/1/3
Jalousie blades	
Step address:	1/1/1
Wind alarm:	1/1/3
Office 20:	
Switch	
Address:	2/0/0

Temperature
 Actual temperature: 2/1/0
 Set temperature: 2/1/1

The element descriptions can be chosen freely or taken over from the ESF-file. The element order can be changed with the arrow buttons. Unused elements can be deleted by clicking the button with the red X. The element buttons do not work in the Editor.



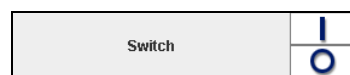
eibDesk Editor: office 101



eibDesk Editor: Office 102

3.2.4.1. The Element „Switch“

The element switch is used for sending EIS 1 values.



eibDesk Editor: Element switch

- The description is for orientation for the user in the eibDesk Client
- The address is a sending address. The element does not receive telegrams. The EIS format is EIS 1.

Element Properties

Element-Typ	Schalter
Beschreibung	
Adresse	

eibDesk Editor: configuration switch

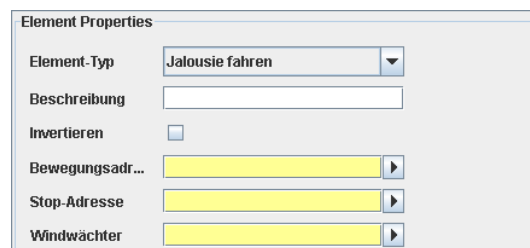
3.2.4.2. The Element „Jalousie move“

The element Jalousie Move is used for sending jalousie move telegrams and jalousie Stop telegrams. If the wind guard alarms the element buttons become inactive and no telegrams are sent any more.



eibDesk Editor: Element Jalousie Move

- The description is for orientation for the user in the eibDesk Client.
- The flag „Invertieren“ reverses the moving direction.
- The moving address is for sending move telegrams. The EIS format is EIS 1.
- The Stop address is for sending stop telegrams. The EIS format is EIS 1.
- The wind guard provides protection at storms. When the wind guard is active it is not possible to send telegrams. EIS 1 telegrams will be received.



The image shows the 'Element Properties' dialog for 'Jalousie fahren'. It contains the following fields:

- Element-Typ: Jalousie fahren (dropdown)
- Beschreibung: (empty text box)
- Invertieren:
- Bewegungsadr...: (yellow text box with right arrow)
- Stop-Adresse: (yellow text box with right arrow)
- Windwächter: (yellow text box with right arrow)

eibDesk Editor: configuration Jalousie Move

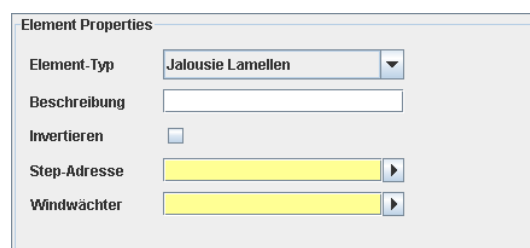
3.2.4.3. The Element „Jalousie Step“

With this element the angle of the blades of the jalousie can be changed. When the wind guard alarms also the blades can not be operated.



eibDesk Editor: Element Jalousie Step

- The description is for orientation for the user in the eibDesk Client.
- The flag „Invertieren“ reverses the move direction of the blades.
- The move address is for sending step telegrams. The EIS format is EIS 1.
- The wind guard provides protection at storms. When the wind guard is active it is not possible to send telegrams. EIS 1 telegrams will be received.



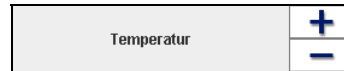
The image shows the 'Element Properties' dialog for 'Jalousie Lamellen'. It contains the following fields:

- Element-Typ: Jalousie Lamellen (dropdown)
- Beschreibung: (empty text box)
- Invertieren:
- Step-Adresse: (yellow text box with right arrow)
- Windwächter: (yellow text box with right arrow)

eibDesk Editor: configuration Jalousie Step

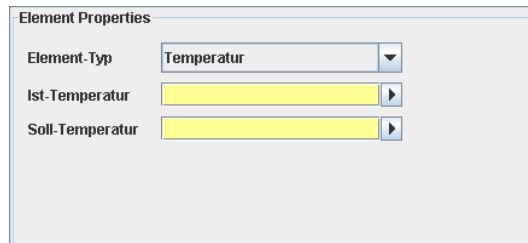
3.2.4.4. The Element „Temperature“

The element Temperatur is used for displaying the actual and the set temperature and for sending the set temperature.



eibDesk Editor: Element Temperature

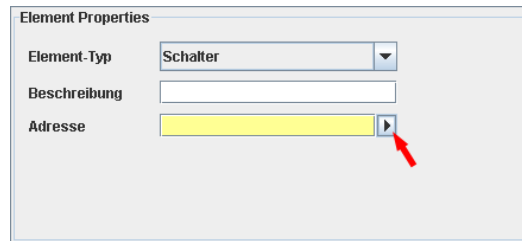
- The actual temperature is a receiving address. EIS 5 (2 Byte floating point) telegrams are received and displayed.
- The set temperature is a receiving and sending address. EIS 5 values are received and displayed; set temperatures are sent as EIS 5 values.



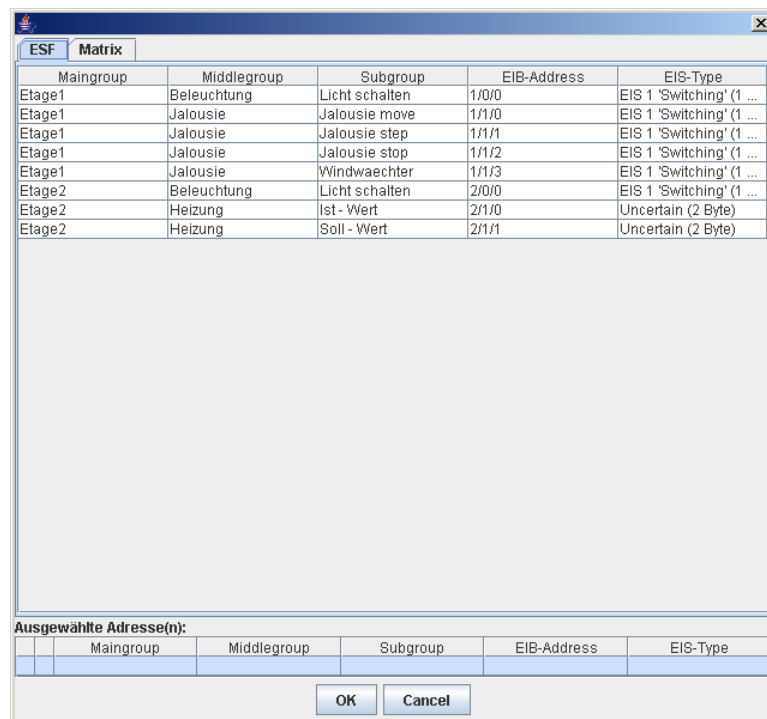
eibDesk Editor: configuration Temperature

3.2.4.5. The Address-Choice-Dialog / ESF-Dialog

If you click on the arrow button in an address field the address-choice-dialog appears. (ESF-Dialog).



eibDesk Editor: address input



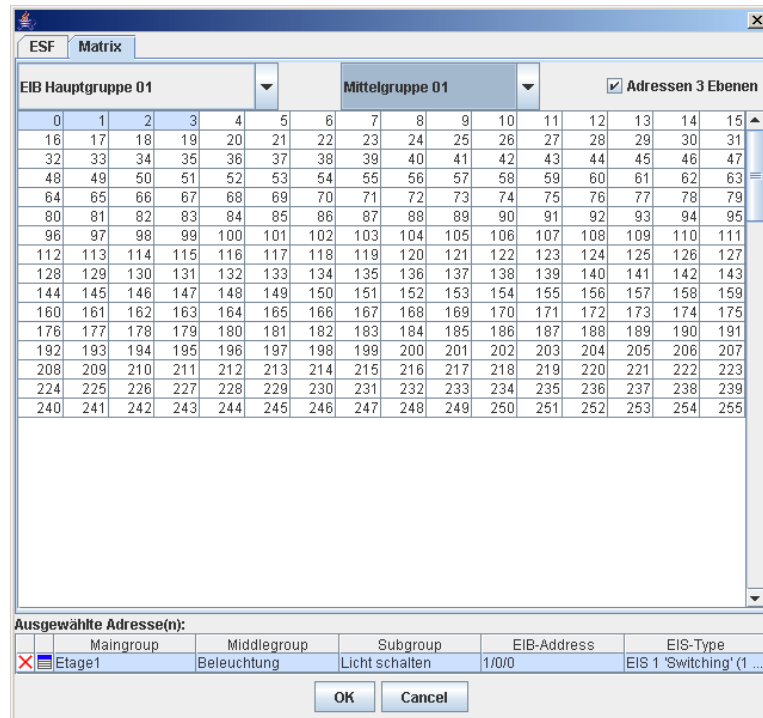
eibDesk Editor: ESF-Dialog

The ESF-Dialog is only available if **before** the configuration an ESF-file has been loaded. Otherwise just the address-choice-matrix is available.

An address is chosen by clicking on the corresponding row and appears in the lower area of the window called „Ausgewählte Adresse(n)“. If the element just has a sending function (switch) only one address can be chosen. At elements with receiving functions (Jalousie wind guard, actual / set temperature) up to 5 addresses are chosen. The upper address is always the sending address. The address order can be changed by clicking on the left button; with it the selected address is displaced to the first place, as sending address. Unused addresses can be deleted by the red X.

The text of the subgroup is taken over as element description from the upper address but may be changed manually afterwards.

The address-choice-matrix works the same way. In the drop-down menus you choose the Maingroup (and the middle group at three-figure addresses). By double clicking the addresses are selected. Addresses which can be found in the ESF-file are marked blue. If the mouse pointer rests some time on a table cell a tool tip with information will appear.



eibDesk Editor: ESF-Dialog Matrix

3.2.4.6. Manual address input

Addresses can be put in manually. The address fields indicate with colours if the addresses are legal:

- Yellow: No address entered.
- Red: Illegal address
- Green: Legal address

Please pay attention to the following at manual address input:

Up to 5 group addresses can be put in. The general syntax sieht:

2/12(2/13,2/14,2/15,2/16)

One group address has the following format:

2/12 (main group/sub group) in 2-figure notation or
2/0/12 (main group/middle group/sub group) in 3-figure notation.

Further addresses have to be set in brackets and separated by commas. The address area includes real and virtual group addresses. The real address area contains the main groups 0-15, the virtual address area contains the main groups 16-32. The first group address is always the sending one. All further addresses just receive.

3.2.5. Save / Load

For saving the current project two options are available:

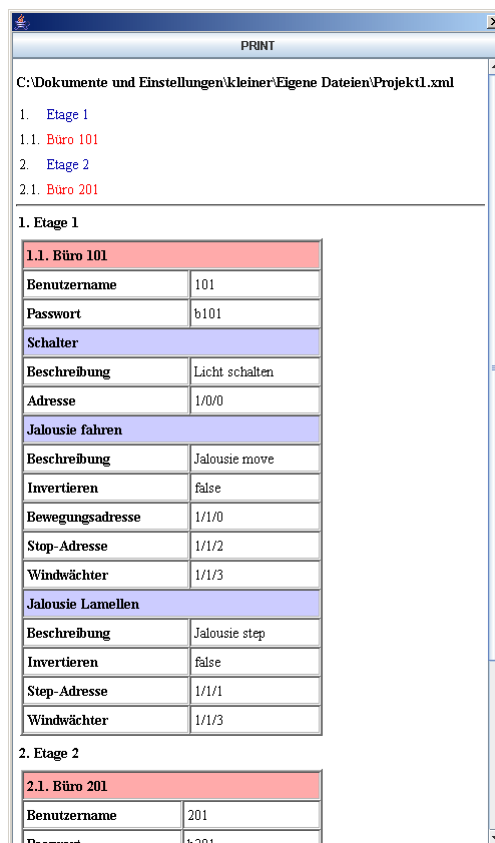
1. Save Overwrites the last saved file.
2. Save as... Choose a file to overwrite or save as new file.

The Data is saved in the XML format.

To load an existing project choose in the menu „Datei“ • „Projekt laden“. A file browser to choose a XML file appears.

3.2.6. Creating Project Documentation

To create and print a project documentation choose “Datei” • „Projektdokumentation erstellen“. The documentation will appear in a new window. To print click on the button „PRINT“.

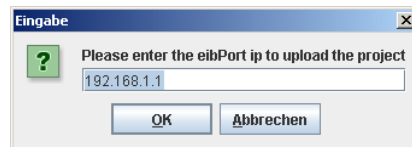


eibDesk Editor: Documentation

3.2.7. Upload to eibPort

To provide access to a project with the eibDesk Client it is necessary to transmit the project to the eibPort. For this the eibPort has to be access able via LAN, internet or ISDN.

Choose den menu item „Datei“ • „Projekt uploaden“. A dialog to enter the aibPort IP address appears.



eibDesk Editor: Upload

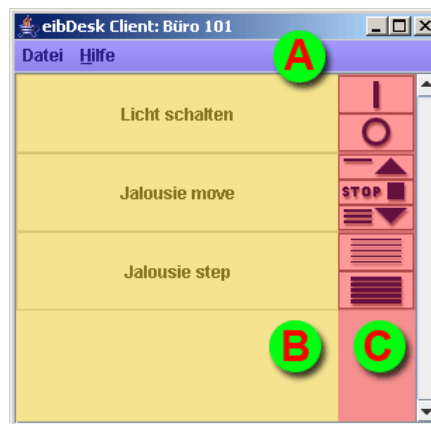
Type in the IP address of the eibPort and click on OK. When the transmission has finished a status message will appear.

Test eibDesk in the Internet:

<http://ep-demo.gotdns.org/bmxJava2/index.html>

4. eibDesk Client

4.1. Program survey



eibDesk Client: Program survey

- | | |
|----------------------|---|
| A) Menu bar | Access to Client properties and help. |
| B) Element view | Survey of all elements of the connected office. |
| C) Element operation | Operation surface. |

4.2. eibDesk Configuration

At the first run when there is no configuration file (config.xml) available the Client-Properties-Dialog appears.



eibDesk Client: Properties

The properties include the eibPort IP-address and user name and password for identifying the offices.
If the address can not be reached or if there is not office with these user data an error message will appear.